



SRK INSTITUTE OF TECHNOLOGY

Enikepadu, Vijayawada 521108
Approved by AICTE, Affiliated to JNTUK, Kakinada
(ISO 9001:2015 Certified Institution)



STUDENTS FEEDBACK ON CURRICULUM ACADEMIC YEAR 2022-23

1. OBJECTIVE OF FEEDBACK

The college is affiliated to Jawaharlal technological university, Kakinada . The syllabus finalized by JNTUK is implemented in the affiliated colleges. The IQAC of the college identifies the curricular gaps and plans for co-curricular/extracurricular activities in college. The college obtains feedback from all the stakeholders like students, alumni, employer, parents and teachers on curriculum/syllabus to enrich the quality of activities performed in college for improvement of the professional skills, employability and entrepreneurial skills of the students.

SUMMARY OF FEEDBACK OBTAINED FROM THE STUDENTS :

S.NO	ACADIMIC YEAR	NO.OF SAMPLE FEEDBACKS COLLECTED
1	2022-23	40

2. The sample of students feedback on curriculum was taken from the students of CE,ME, CSE, ECE, EEE , IT,MBA,IMBA,MCA at the end of each semester.

S.NO	COURSES OFFERED	NO.OF.SAMPLES COLLECTED
1	CE	4
2	MECH	4
3	EEE	4
4	ECE	5
5	CSE	11
6	IT	4
7	MBA	2
8	IMBA	4
9	MCA	2


PRINCIPAL
PRINCIPAL

SRK INSTITUTE OF TECHNOLOGY
ENIKEPADU, VIJAYAWADA-5



SRK INSTITUTE OF TECHNOLOGY

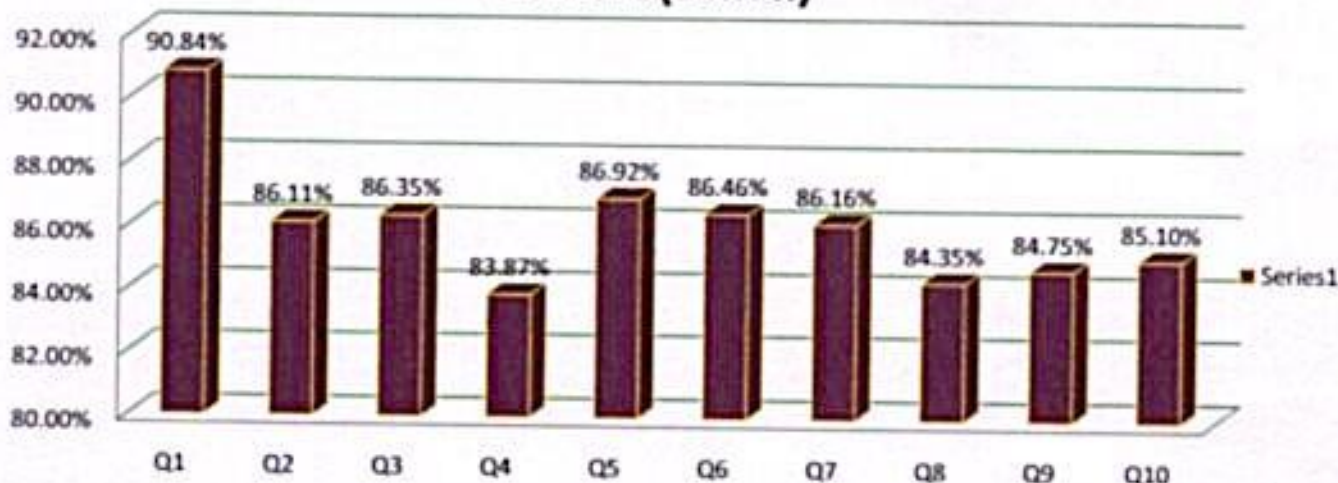
Enikepada, Vijayawada 521108
Approved by AICTE, Affiliated to JNTUK, Kakinada
(ISO 9001:2015 Certified Institution)

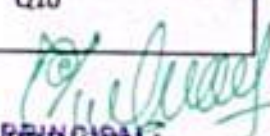


STUDENTS FEEDBACK AND ANYLISIS ON CURRICULUM DESIGN 2022-23

S/NO	QUESTIONNAIRE	FEEDBACK
1	How do rate the relevance of the curriculum and syllabi to the courses?	<u>90.84%</u>
2	How do rate the extent of syllabi covered in the class?	<u>86.11%</u>
3	How do you rate the offering of the electives in terms of relevancy to the curriculum?	<u>86.35%</u>
4	How do you rate the usage of teaching aids and ICT in the class by faculty to facilitate teaching?	<u>83.87%</u>
5	How do you rate the transparency in the assessment processes?	<u>86.92%</u>
6	How do you rate the opportunities in the college for research activities?	<u>86.46%</u>
7	How do you rate the promptness in evaluating the answer scripts?	<u>86.16%</u>
8	How do you rate the out of class room learning (guest lectures, seminars, workshop, value added programmes, conferences, competitions)	<u>84.35%</u>
9	How do you rate the opportunity for students to participate in internship, student exchange and field visit?	<u>84.75%</u>
10	How do you rate the size of the syllabus in terms of load on the student?	<u>85.10%</u>

Student Feedback on Curriculum Design 2022-23(SEM II)




PRINCIPAL
SRK INSTITUTE OF TECHNOLOGY
ENIKEPADU, VIJAYAWADA-521 108