

SRK INSTITUTE OF TECHNOLOGY
Enikepadu, Vijayawada 521108
Approved by AICTE, Affiliated to JNTUK, Kakinada
(ISO 9001:2015 Certified Institution)

**EMPLOYERS FEEDBACK ON CURRICULUM
ACADEMIC YEAR 2017-18**


1 .OBJECTIVE OF FEEDBACK

The college is affiliated to Jawaharlal technological university, Kakinada . The syllabus finalized by JNTUK is implemented in the affiliated colleges. The IQAC of the college identifies the curricular gaps and plans for co-curricular/extracurricular activities in college. The college obtains feedback from all the stakeholders like students, alumni, employer and teachers on curriculum/syllabus to enrich the quality of activities performed in college for improvement of the professional skills, employability and entrepreneurial skills of the students.

SUMMARY OF FEEDBACK OBTAINED FROM THE EMPLOYERS :

S.NO	ACADIMIC YEAR	NO.OF FEEDBACKS COLLECTED
1	2017-18	5

TOTAL RESPONDENTS:5


PRINCIPAL

PRINCIPAL
SRK Institute of Technology
ENIKEPADU, VIJAYAWADA-521 108.

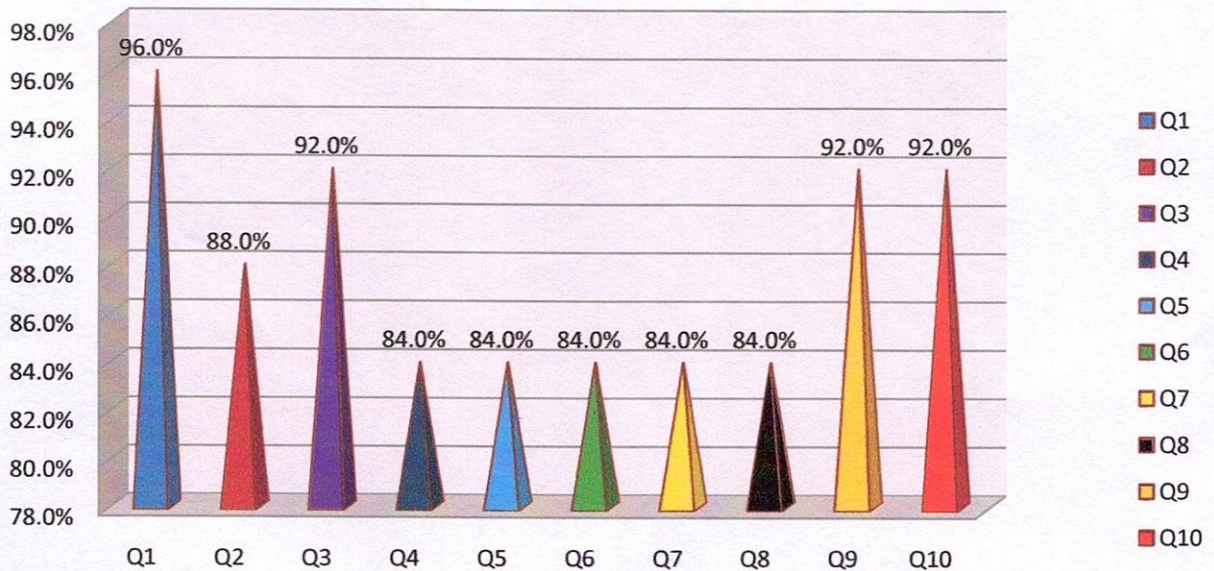


SRK INSTITUTE OF TECHNOLOGY
 Enikepadu, Vijayawada 521108
 Approved by AICTE, Affiliated to JNTUK, Kakinada
 (ISO 9001:2015 Certified Institution)

EMPLOYERS FEEDBACK AND ANALYSIS ON CURRICULUM DESIGN 2017-18

S/NO	QUESTIONNAIRE	FEEDBACK
1	How do you rate the technical knowledge of the students?	96.0%
2	How do rate the relevance of the curriculum for employability?	88.0%
3	How do you rate the students' ability to work in teams?	92.0%
4	How do you rate the students' managerial and leadership qualities?	84.0%
5	How do you rate the students' ability to learn and mould themselves in the industrial practices?	84.0%
6	How do you rate the students' contribution to the growth of industries?	84.0%
7	How do you rate the communication skills of the students?	84.0%
8	How do you rate the offering of electives in relation to the technological advancements?	84.0%
9	How do you rate the training and placement support in the curriculum?	92.0%
10	How do you rate the overall learning ambience of the college?	92.0%

Employers Feedback On Curriculum Design 2017-18



(Signature)

PRINCIPAL

PRINCIPAL

SRK Institute of Technology
ENIKEPADU, VIJAYAWADA-521 108.



SRK INSTITUTE OF TECHNOLOGY
Enikepadu, Vijayawada 521108
Approved by AICTE, Affiliated to JNTUK, Kakinada
(ISO 9001:2015 Certified Institution)

**EMPLOYERS FEEDBACK ON CURRICULUM
ACADEMIC YEAR 2018-19**

1 .OBJECTIVE OF FEEDBACK

The college is affiliated to Jawaharlal technological university, Kakinada . The syllabus finalized by JNTUK is implemented in the affiliated colleges. The IQAC of the college identifies the curricular gaps and plans for co-curricular/extracurricular activities in college. The college obtains feedback from all the stakeholders like students, alumni, employer and teachers on curriculum/syllabus to enrich the quality of activities performed in college for improvement of the professional skills, employability and entrepreneurial skills of the students.

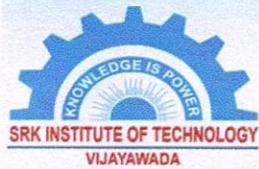
SUMMARY OF FEEDBACK OBTAINED FROM THE EMPLOYERS :

S.NO	ACADIMIC YEAR	NO.OF FEEDBACKS COLLECTED
1	2018-19	4

TOTAL RESPONDENTS:4

PRINCIPAL

PRINCIPAL
SRK Institute of Technology
ENIKEPADU, VIJAYAWADA-521 108.

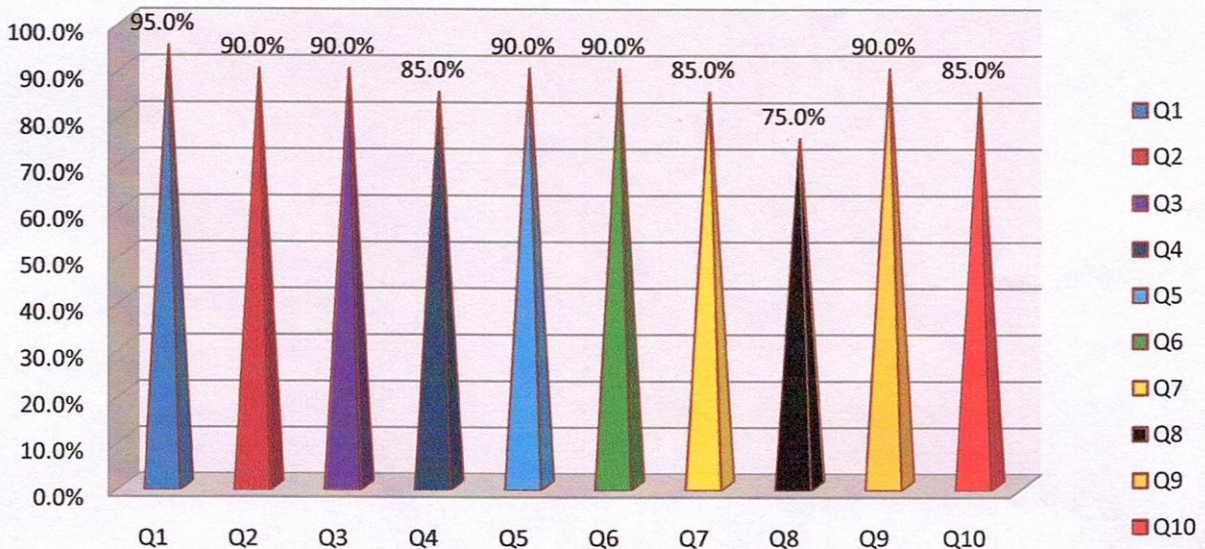


SRK INSTITUTE OF TECHNOLOGY
 Enikepadu, Vijayawada 521108
 Approved by AICTE, Affiliated to JNTUK, Kakinada
 (ISO 9001:2015 Certified Institution)

EMPLOYERS FEEDBACK AND ANALYSIS ON CURRICULUM DESIGN 2018-19

S/NO	QUESTIONNAIRE	FEEDBACK
1	How do you rate the technical knowledge of the students?	95.0%
2	How do rate the relevance of the curriculum for employability?	90.0%
3	How do you rate the students' ability to work in teams?	90.0%
4	How do you rate the students' managerial and leadership qualities?	85.0%
5	How do you rate the students' ability to learn and mould themselves in the industrial practices?	90.0%
6	How do you rate the students' contribution to the growth of industries?	90.0%
7	How do you rate the communication skills of the students?	85.0%
8	How do you rate the offering of electives in relation to the technological advancements?	75.0%
9	How do you rate the training and placement support in the curriculum?	90.0%
10	How do you rate the overall learning ambience of the college?	85.0%

Employers Feedback On Curriculum Design 2018-19



PRINCIPAL

PRINCIPAL

SRK Institute of Technology
ENIKEPADU, VIJAYAWADA-521 108.



SRK INSTITUTE OF TECHNOLOGY
Enikepadu, Vijayawada 521108
Approved by AICTE, Affiliated to JNTUK, Kakinada
(ISO 9001:2015 Certified Institution)

**EMPLOYERS FEEDBACK ON CURRICULUM
ACADEMIC YEAR 2019-20**

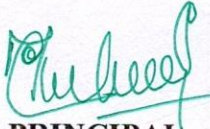
1 .OBJECTIVE OF FEEDBACK

The college is affiliated to Jawaharlal technological university, Kakinada . The syllabus finalized by JNTUK is implemented in the affiliated colleges. The IQAC of the college identifies the curricular gaps and plans for co-curricular/extracurricular activities in college. The college obtains feedback from all the stakeholders like students, alumni, employer and teachers on curriculum/syllabus to enrich the quality of activities performed in college for improvement of the professional skills, employability and entrepreneurial skills of the students.

SUMMARY OF FEEDBACK OBTAINED FROM THE EMPLOYERS :

S.NO	ACADIMIC YEAR	NO.OF FEEDBACKS COLLECTED
1	2019-20	5

TOTAL RESPONDENTS:5


PRINCIPAL

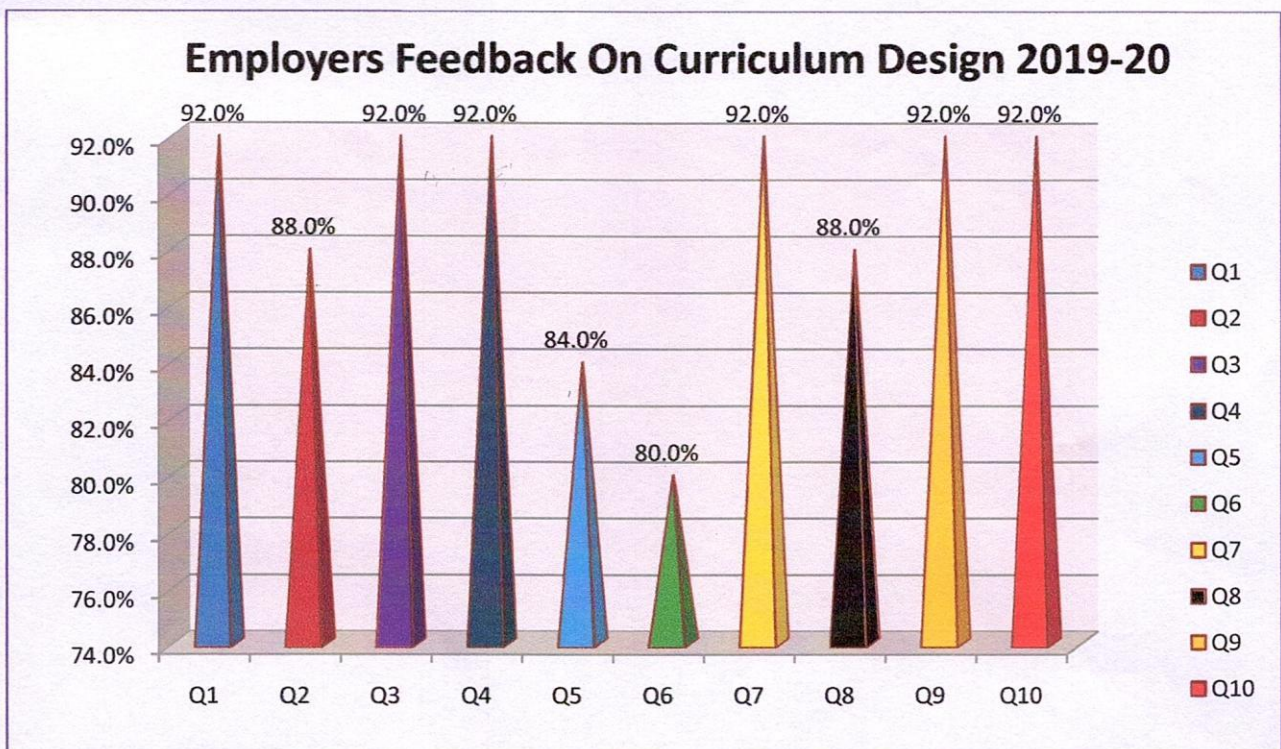
PRINCIPAL
SRK Institute of Technology
ENIKEPADU, VIJAYAWADA-521 108.



SRK INSTITUTE OF TECHNOLOGY
 Enikepadu, Vijayawada 521108
 Approved by AICTE, Affiliated to JNTUK, Kakinada
 (ISO 9001:2015 Certified Institution)

EMPLOYERS FEEDBACK AND ANALYSIS ON CURRICULUM DESIGN 2019-20

S/NO	QUESTIONNAIRE	FEEDBACK
1	How do you rate the technical knowledge of the students?	92.0%
2	How do rate the relevance of the curriculum for employability?	88.0%
3	How do you rate the students' ability to work in teams?	92.0%
4	How do you rate the students' managerial and leadership qualities?	92.0%
5	How do you rate the students' ability to learn and mould themselves in the industrial practices?	84.0%
6	How do you rate the students' contribution to the growth of industries?	80.0%
7	How do you rate the communication skills of the students?	92.0%
8	How do you rate the offering of electives in relation to the technological advancements?	88.0%
9	How do you rate the training and placement support in the curriculum?	92.0%
10	How do you rate the overall learning ambience of the college?	92.0%



S. Sri Gowri
 IQAC COORDIANTOR

[Signature]
 PRINCIPAL

PRINCIPAL
 SRK Institute of Technology
 ENIKEPADU, VIJAYAWADA-521 198.